

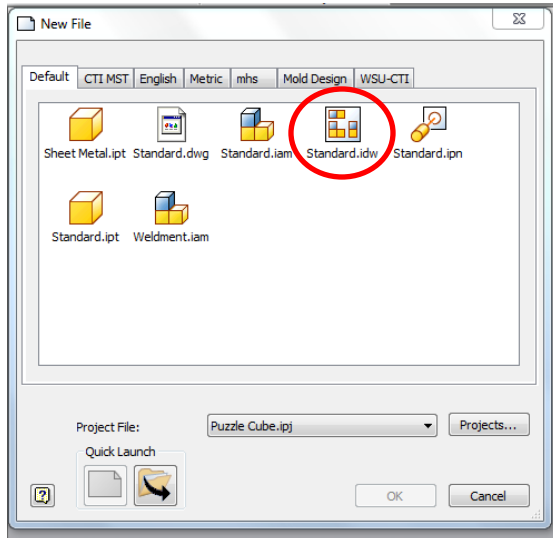


MARQUETTE  
ENGINEERING

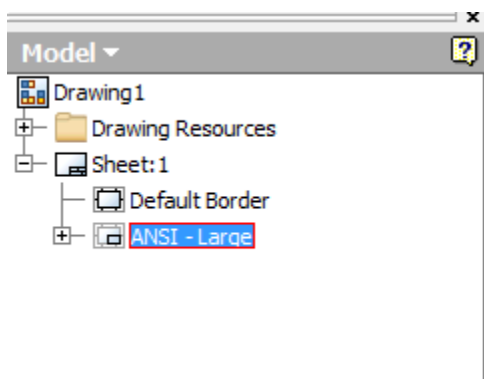


## Creating a Custom Title Block using Inventor 2012

**Step 1: Open a new drawing sheet using the Standard.IDW file.**

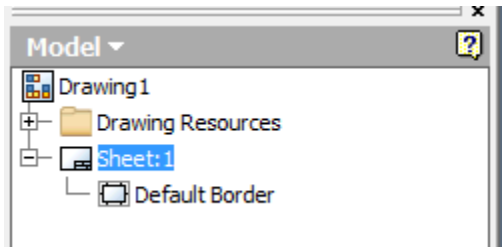


**Step 2: Using the browser bar, delete the existing title block.**

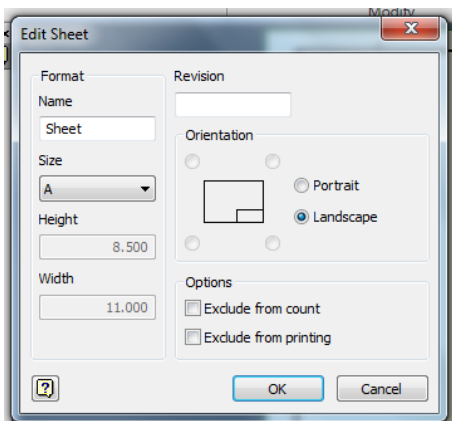


Right click and choose Delete on ANSI-Large

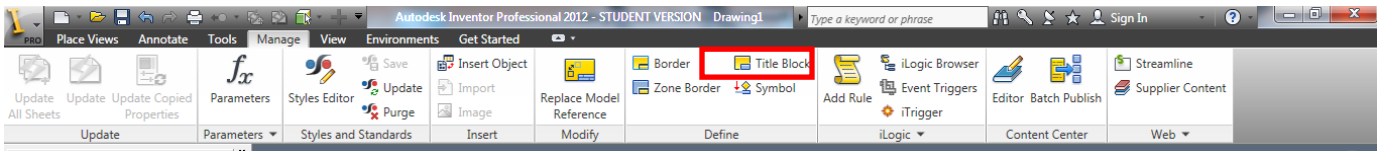
**Step 3: Right-click on Sheet:1 and Choose Edit Sheet to change the sheet size.**



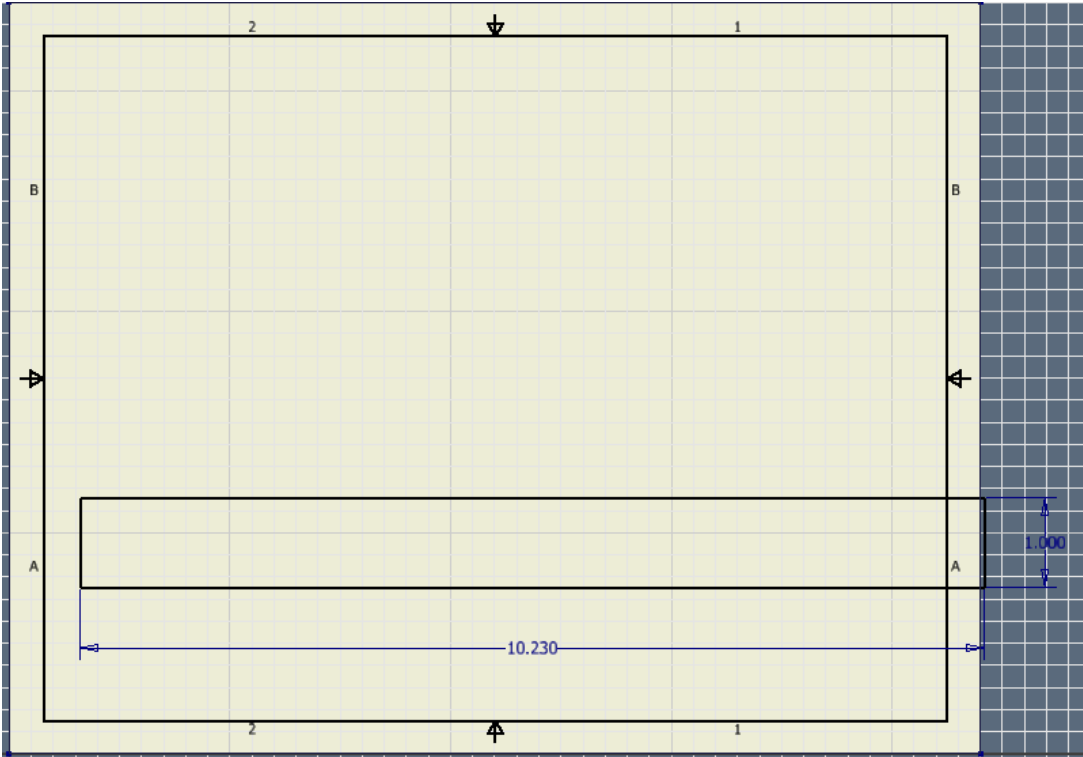
**Step 4: Change the Sheet to the desired print size. We will be using size A. Then choose ok.**



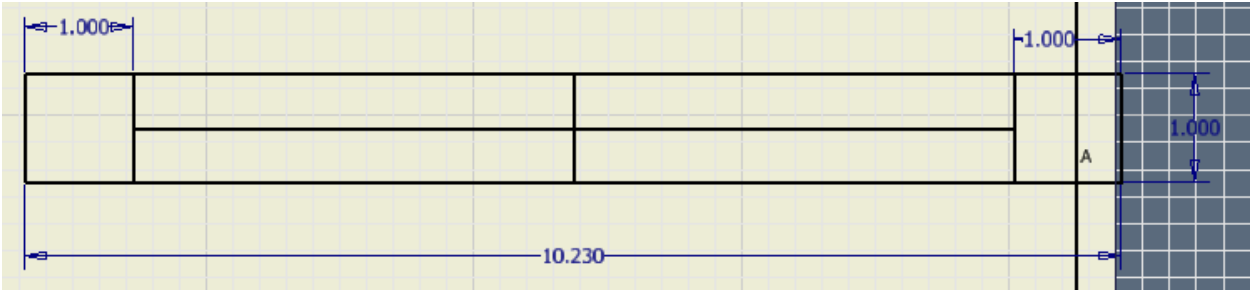
**Step 5: From the Manage tab, select Title block.**



Step 6. Create a rectangle 10.23 X 1 inches on the drawing sheet. Location is not important.



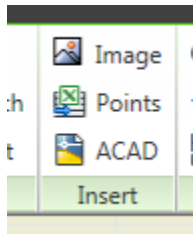
Step 7: Draw your title block as you like. Feel free to use this one as a reference.



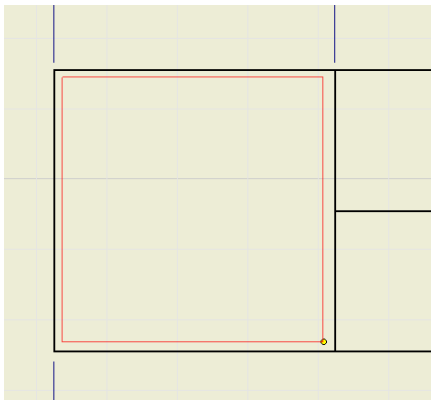
This will be our simple title block. Feel free to adjust or add other areas to the block.

**Step 8: Inserting Images.**

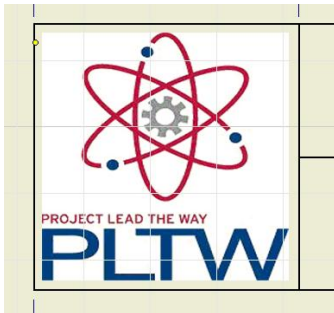
On the sketch tab, select image to insert the image.



**Step 9: Create a rectangle for the image to insert.**

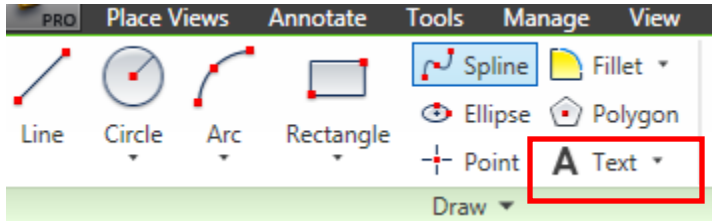


Select an image to insert. Image must be a .bmp image.

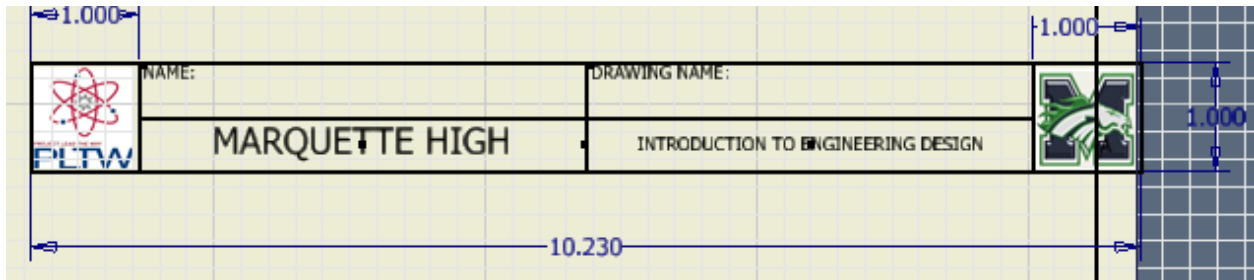


Repeat in the other box.

**Step 10. Entering permanently appearing text to the title block.**

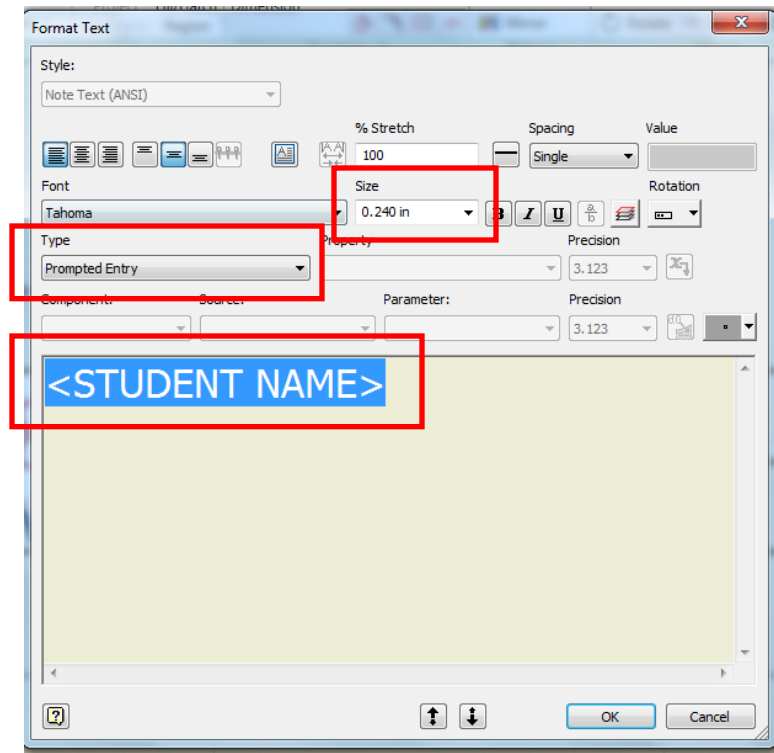


Using the text tool. Apply text that will always appear in the title block. All text should be capitalized.

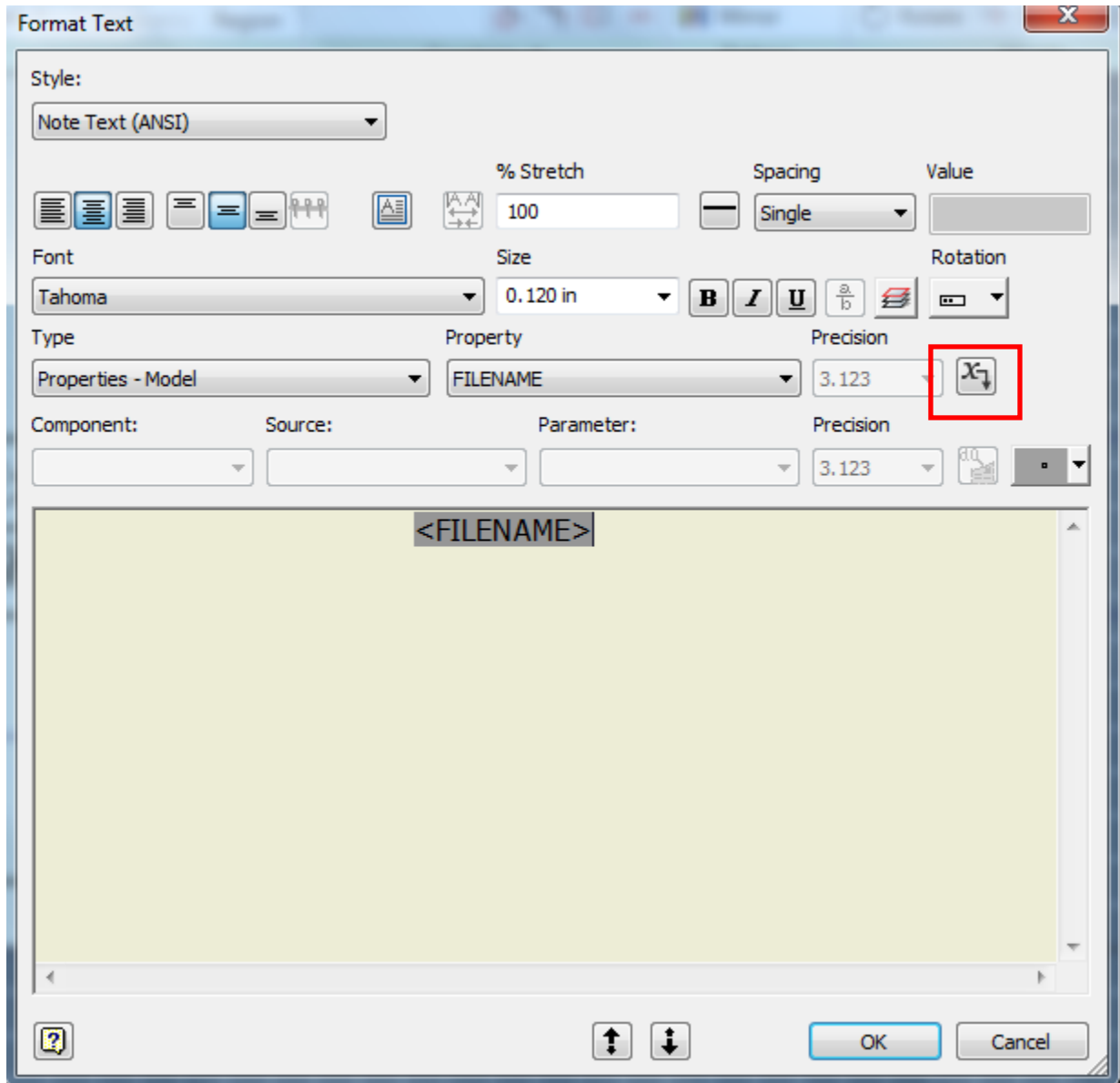


**Step 11: Creating a prompted Entry. Text that the user will be prompted to type for inserting in the title block. Be sure to set your dialog box like the one below.**

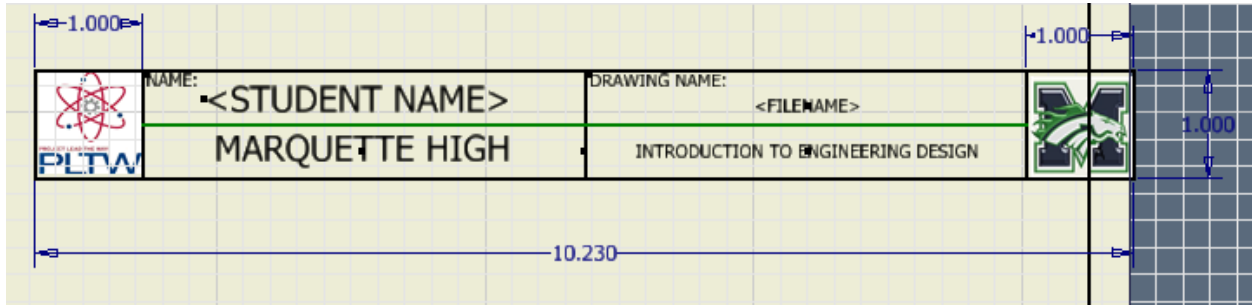
Then select OK.



**Step 12: Using the properties of the Model. Be sure to set your dialog box like the one below. One important step that must be done is to select the marked box below after selecting the type and property choices. Then select ok.**

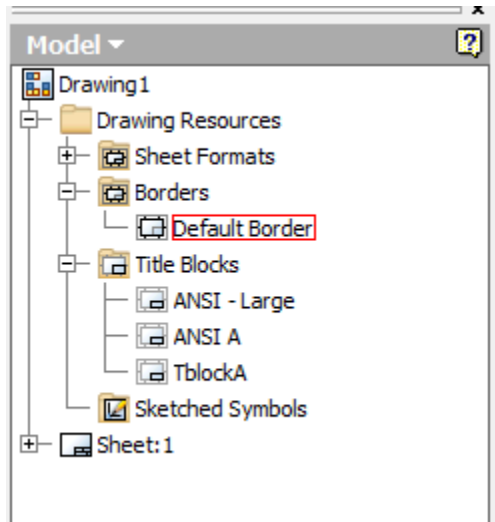


**Step 13: Once you have your title block the way you want it. Select Finish sketch in the top right corner of your program.**



**It will ask you to name your title block. I have named mine TblockA. Your title block will disappear, but we will insert it next.**

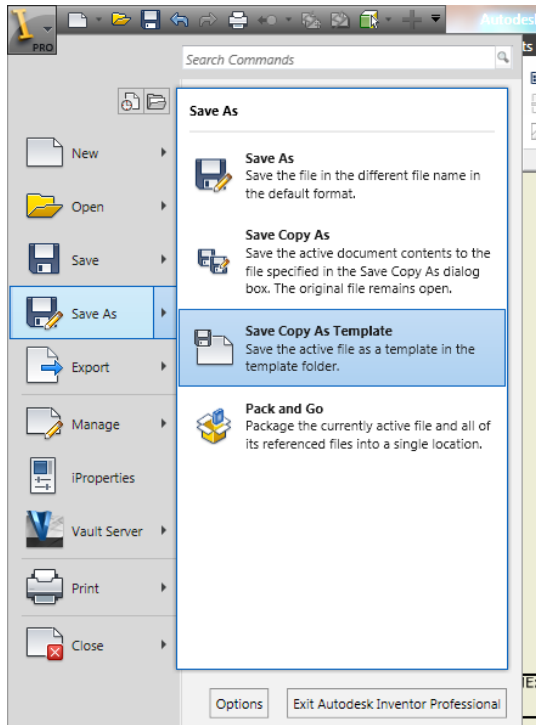
**Step 14: Go to the browser bar and expand the title Blocks section.**



**Right click on TblockA and choose insert.**

**The title block will automatically insert into the drawing sheet.**

**Step 15: Go the I in the top left corner and mouse over Save as..**



**Select save copy as template.**

**This will place your title block in the templates folder.**

**Choose new and give it a try!**



